



Sinclair Hammelton



ASKING PRICE

**£750,000**

**The Grove**

Westerham, TN16 3TB



## PROPERTY SUMMARY

Backing onto woodland and set back from the road, this well-appointed and fastidiously maintained five bedroom, three bathroom detached chalet bungalow is situated on the borders of Biggin Hill & Tatsfield. The property offers flexible accommodation and benefits from a self-contained one-bedroom annexe, perfect for multi-generational living. The property is tastefully decorated and modernised to a very high standard and benefits from a double garage. EPC: D

Freehold  
COUNCIL TAX - F  
Construction - Traditional brick  
Mains Services - Yes  
Heating System - Gas radiators  
Broadband - EE excellent coverage  
Mobile coverage - EE 77% performance score, good outdoor and variable in home  
Restrictive covenants - No

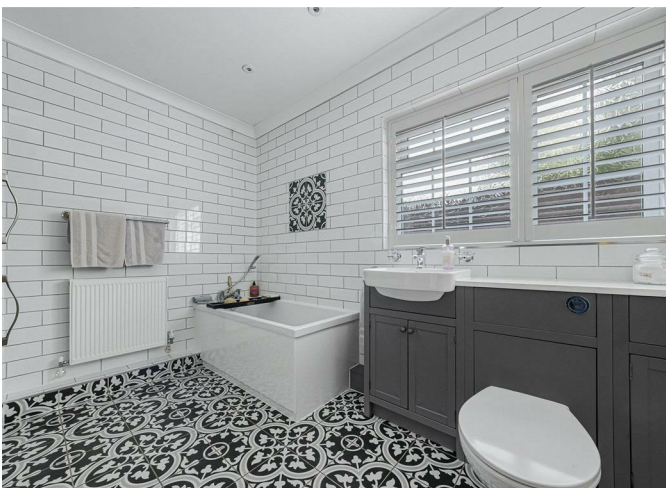
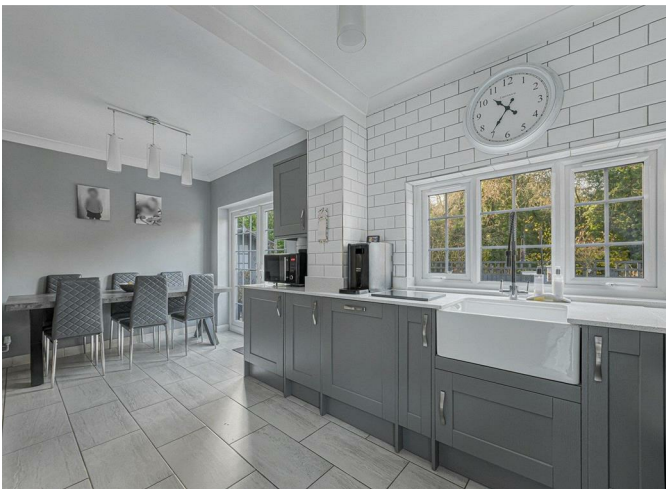
5



3



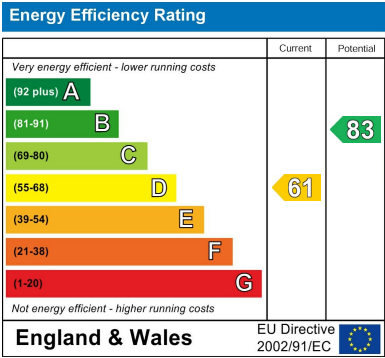
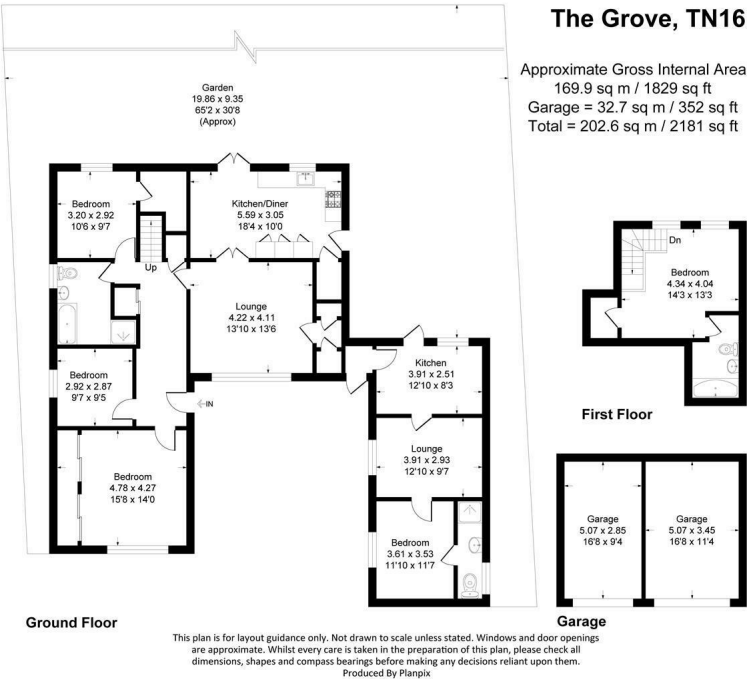
2











**EPC RATING: D COUNCIL TAX BAND: F**

Agents Note: Whilst every care has been taken to prepare these particulars, they are for guidance purposes only. All measurements are approximate and are for general guidance purposes only and whilst every care has been taken to ensure their accuracy, they should not be relied upon and potential buyers/tenants are advised to recheck the measurements

**OFFICE ADDRESS**  
 1&2 The Grange  
 Westerham  
 Kent  
 TN16 7AH

**OFFICE DETAILS**  
 01959 587 460  
 infowh@sinclairhammelton